

The **NV** and **ELC Series** are offered where a reliable, long-life, low maintenance wet battery unit is required. These series are designed for remote capability and offer a wide selection of battery capacities.

## UL Listed

Complies with NEC, Life Safety Code and OSHA. Approved use in the Commonwealth of Pennsylvania.

## Wet Refillable Batteries

- Wet Nickel Cadmium
- Wet Lead Calcium

Wet nickel cadmium batteries are advantageous for areas that experience extreme ambient temperature fluctuations.

## Standard Features

### Reliability

The NV and ELC Series comes complete with a 3-year full warranty.

### Unit Data

Constructed of 18 gauge steel with an off-white baked enamel finish. Removable front panel with battery viewport. Furnished standard with two EF-18 heads, with one 9 watt lamp per head.

### PulsePlus Charger

PulsePlus circuitry offers 120/277 volt input 60 Hz., 0.3 Amp (other inputs available), fused output circuit(s), dual diagnostic indicator lights, temperature compensation, sealed relay, low voltage battery disconnect, brownout protection and lockout (automatic battery connect).

## Optional Features

### Description

Description	Add Suffix
Ammeter.....	A*
Voltmeter.....	V*
Advanced diagnostics (ELC units only).....	AD
Advanced diagnostics, non-audible (ELC units only).....	ADNA
Lamp disconnect switch.....	LD
Time delay (specify 5, 10 or 15 minutes).....	TD**
Non-standard input voltage.....	Specify
Cord set – 120 volt.....	CP***
Cord set – special voltage (specify plug type).....	XP***
Automatic unit cycler.....	AUC**

### Accessories (order as a separate item)

Mounting shelf (cabinet C).....	MP6
Mounting shelf (cabinet D).....	MP12
Wire guard (cabinet C).....	WG3
Wire guard (cabinet D).....	WG4

\*Not available with diagnostics options

\*\*Not required with the AD option.

\*\*\*Standard cord is 3 ft., custom lengths available.

## How To Order (example)

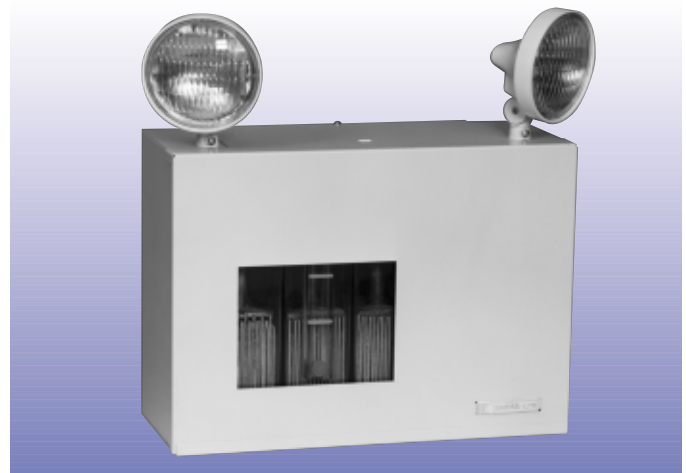
For standard units without options only order Series, Battery, Watts and Heads Options are added to units by listing suffix at end of model #

**EL - C - 90 - 2 - \*(UA) - WG3**

Series	Battery Type	Watts	Heads	Lamp Option	Option
	wet lead calcium	for 90 min.	on unit	6V 9W Incandescent	wire guard

Includes standard lamp

\*see lamp data sheet in lighting fixture section for other lamp wattages.



## Unit Rating Chart

Furnished standard with two 9 watt High Intensity Incandescent lamps.

UNIT EQUIPMENT -WITH REMOTE CAPABILITY							
Wet Refillable Battery Types	D.C. Voltage	Model Number	*Watts to 87 1/2% of rated battery voltage				Cabinet Size
			1 1/2 hrs.	2 hrs.	4 hrs.	8 hrs.	
Wet Nickel Cadmium	6	NV81-2	81	70	30	18	C
	6	NV93-2	93	75	33	24	C
	6	NV125-2	125	100	54	30	C
	6	NV163-2	163	126	72	40	C
	12	12NV162-2	162	140	60	36	D
	12	12NV186-2	186	150	66	48	D
	12	12NV250-2	250	200	106	60	D
Wet Lead Calcium	12	12NV326-2	326	252	140	80	D
	6	ELC90-2	90	72	42	20	C
	6	ELC110-2	110	81	46	23	C
	6	ELC200-2	200	162	94	46	C
	12	12ELC200-2	200	160	90	46	C
	12	12ELC400-2	400	320	185	93	D

\*National Electrical Code Specification

Δ = Advanced diagnostics available

## Outline and Dimensions

Dimensions are approximate and subject to change.

